

PERFORMANCE CONDUCTIVE ADDITIVES FOR LITHIUM-ION BATTERIES

LITX™ 50 & 200

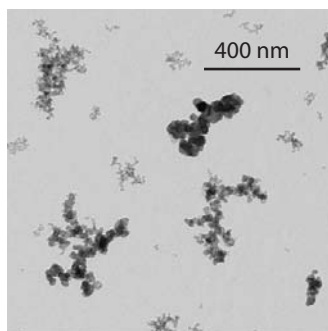
LITX50 and LITX200 are high performance conductive additives that balance the need for conductivity with easy processing, resulting in improved electrode adhesion strength, a key factor in improving battery cell performance, quality and cost.

Benefits of incorporating LITX grades into your electrode paste:

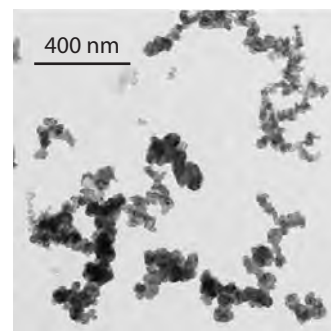
- Enables higher solids loadings
- Reduces amount of solvent and conductive additive required
- Provides higher packing density
- Promotes electrolyte distribution and transport
- Improves performance at low temperatures

Applications

- Hybrid electric vehicles
- Tablets
- Smartphones
- Power tools



LITX200



LITX50

Typical Values

Property	Test Method	Unit	LITX200 High power	LITX50 Multi-purpose
BET Nitrogen surface area	ASTM D6556	m ² /g	125 – 175	50-55
OAN	ASTM D2414	ml/100g	155 – 165	125-145
Iron	Internal method	ppm	<10	<10
Total Co, Cr, Cu, Mn, Ni	Internal method	ppm	<5	<5

Standard Packaging

LITX200: 5kg bags
LITX50: 7.5kg bags

General Characteristics

Formula: Carbon
Form: Fine powder/fluffy
CAS number: 1333-86-4

For more information contact:
battery.materials@cabotcorp.com

© Cabot Corporation 2013 • All Rights Reserved. LITX is a trademark of Cabot Corporation.

www.cabotcorp.com/batteries

Notice and Disclaimer. The data and conclusions contained herein are based on work believed to be reliable; however, Cabot cannot and does not guarantee that similar results and/or conclusions will be obtained by others. This information is provided as a convenience and for informational purposes only. No guarantee or warranty as to this information, or any product to which it relates, is given or implied. CABOT DISCLAIMS ALL WARRANTIES EXPRESS OR IMPLIED, INCLUDING MERCHANTABILITY OR FITNESS FOR A PARTICULAR PURPOSE AS TO (i) SUCH INFORMATION, (ii) ANY PRODUCT OR (iii) INTELLECTUAL PROPERTY INFRINGEMENT. In no event is Cabot responsible for, and Cabot does not accept and hereby disclaims liability for, any damages, whatsoever in connection with the use of or reliance on this information or any product to which it relates.

