

SHIRAIISHI KOGYO KAISHA, LTD.

4-78, Motohama-cho, Amagasaki, 660-0085 JAPAN

Tel:+81-6-6417-3134 Fax:+81-6-6417-9591

E-mail:sales@shiraishi.co.jp

HAKUENKA CCR-S

HAKUENKA CCR-S has an excellent heat-stability.

HAKUENKA CCR-S can be easily dispersed to the various kinds of resin.

HAKUENKA CCR-S was specially developed to improve curing condition for the model LP282 of polysulfide sealant with Toray Fine Chemicals Co., Ltd. LP282 is different from LP55. LP282 uses tin as a catalyst while LP55 uses lead which is environmentally worse than tin..

HAKUENKA CCR-S has 80nm ultra-fine particles similar to HAKUENKA CCR. The difference is chemical coating agent.

Crystal Properties

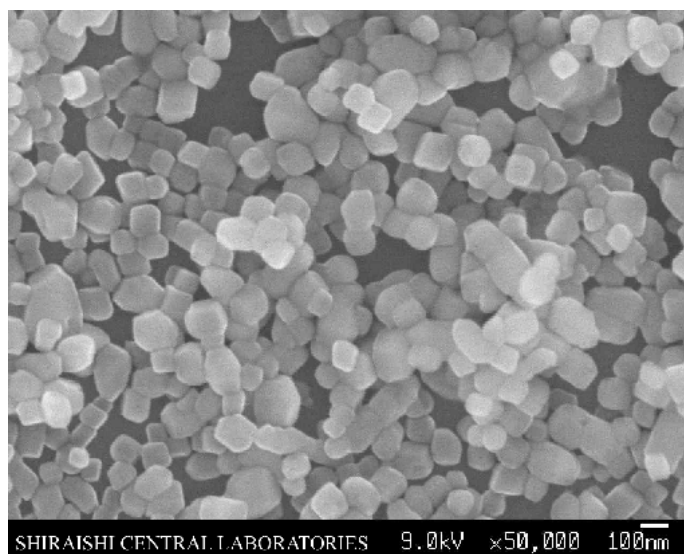
Crystal Structure		Calcite
Particle Shape		Cubic
Specific Gravity	g/cm ³	2.52
Refractive Index		1.5-1.7

Powder Properties (Typical)

Whiteness	%	95
BET Specific Surface Area	m ² /g	17.0
pH (Reference)		9.3
Average Particle Size	nm	80
Moisture	%	0.5

SEM Image

× 50,000



Classification

Molecular Formula	CaCO ₃
CAS Number	471-34-1

SHIRAISHI KOGYO KAISHA, LTD.

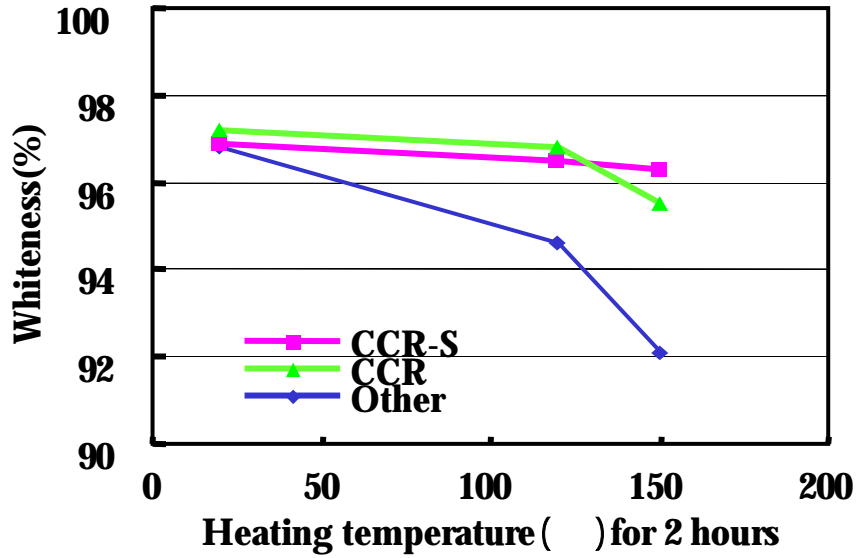
4-78, Motohama-cho, Amagasaki, 660-0085 JAPAN

Tel:+81-6-6417-3134 Fax:+81-6-6417-9591

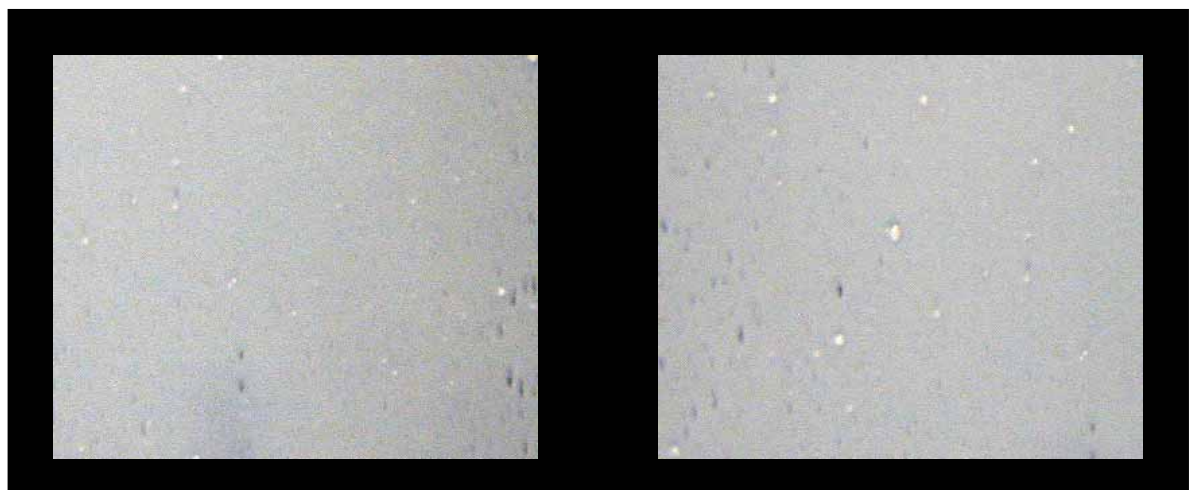
E-mail:sales@shiraishi.co.jp

1. Heat-resistance

Changing whiteness of CaCO₃ powder under heating



2. Easy dispersion



HAKUENKA CCR-S

HAKUENKA CCR