

**SHIRAISHI KOGYO KAISHA, LTD.**

4-78, Motohama-cho, Amagasaki, 660-0085 JAPAN

Tel: +81-6-6417-3134 Fax: +81-6-6417-9591

E-mail: sales@shiraishi.co.jp

**HOMOCAL-D**

**HOMOCAL-D** is a ultra-fine calcium carbonate which has 80 nm of particles as primary particle. These particles are surface coated with rosin acids in order to provide compatible surface modification when it is mixed with vehicle or diluents.

**HOMOCAL-D** is commonly applied to paint application where high concentrate formulation is required.

**HOMOCAL-D** contributes to improve brushing feature at the painting, also contributes to create glossy but smooth paint surface.

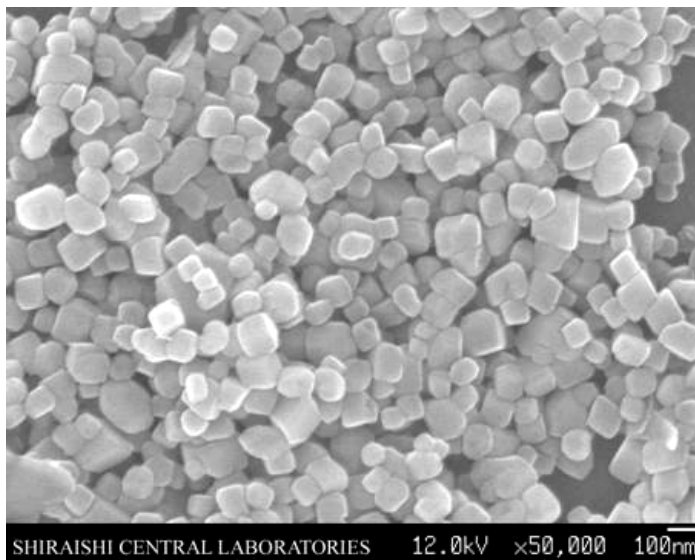
**HOMOCAL-D**, at the blend use with TiO<sub>2</sub>, contributes to improve water resistance, better anti-alkaline and anti-gasoline properties.

**Crystal Properties**

Crystal Structure		Calcite
Particle Shape		Cubic
Specific Gravity	g/cm <sup>3</sup>	2.45
Refractive Index		1.5-1.7

**Powder Properties (Typical)**

Whiteness	%	94
BET Specific Surface Area	m <sup>2</sup> /g	16.0
pH (Reference)		8.8
Average Particle Size	nm	80
Moisture	%	1.0

**SEM Image**  
× 50,000**Classification**

Molecular Formula	CaCO <sub>3</sub>
CAS Number	471-34-1