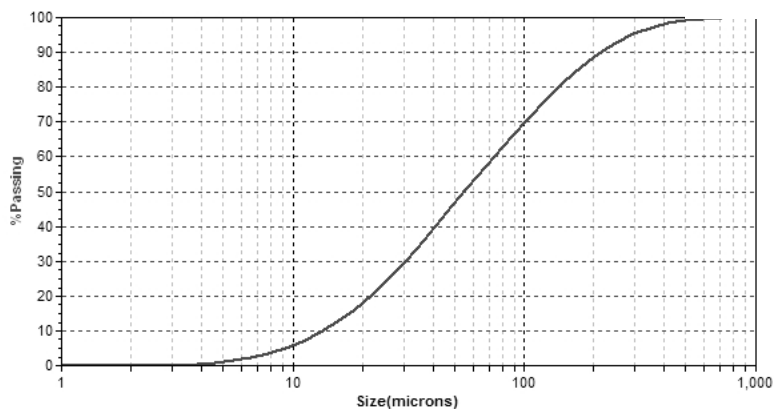


TYPICAL PROPERTIES

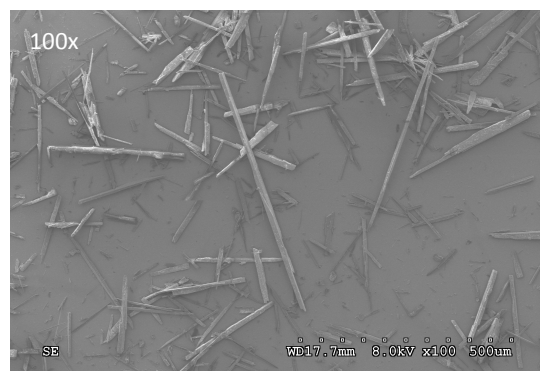
Appearance	White
Morphology	Acicular
Aspect ratio (L:D)	15:1
Relative particle size (µm)	55x825
G.E. Brightness	82
Surface area (BET)	0.4 m ² /g
Loose bulk density	0.40 g/cm ³ (25 lbs/ft ³)
Tapped bulk density	0.80 g/cm ³ (50 lbs/ft ³)
Specific gravity	2.9 g/cm ³
Hardness (Mohs' scale)	4.5
pH (10% slurry)	9.9
Oil absorption	20 g/100 g

PARTICLE SIZE DISTRIBUTION CURVE

Laser diffraction, Mie Theory
Median diameter: 55 µm



MICROGRAPH (BY SCANNING ELECTRON MICROSCOPY)



Notice: Although the data listed are typical, they are not production specifications. The supplier provides the data in good faith, however it makes no warranty or representation of any kind, express or implied, regarding the information given or product described including any warranty of suitability for a particular purpose.

For more information, please visit www.imerys-performance-additives.com

COA/ENG/04/2018